

Thermal Receipt Printer



a Better Solution
for your Business™

Dual-Interface and High-Performance SRP-350plus

SRP-350plus Highlights

- **Fast printing speed of up to 200mm per second (30% faster than the SRP-350)**
 - Optimized mechanical components and software to enable fast and stable printing
 - Improved CPU (32 Bit), Bigger Memory (4 Kbytes)
- **USB 2.0 on board standard**
- **High speed USB 2.0(480 Mbps)**
- **Long lasting auto-cutter up to 1.8 million cuts with easy paper-jam removal**
- **Customer oriented software tools provided**
 - Firmware download
 - Virtual Memory Switch Manager (VMMS)
 - NV image download
- **2D barcode printing support**
 - PDF417
 - QR Code
- **Two different models**
 - SRP-350plusC (with auto-cutter)
 - SRP-350plusA (without auto-cutter)

BIXOLON®

SRP-350plus Dual-Interface and High-Performance

With improved functions and specifications, the SRP-350plus is a leap forward in technology representing BIXOLON's commitment to supply the best and the right product for our customers and our partners.



MAIN FEATURES WITH SPECIFICATIONS

Fast printing of texts and images

To speed up customer transactions without sacrificing performance, the SRP-350plus prints texts and graphics at a consistent speed of 200mm per second which is amazingly 30% faster than the industry leading the SRP-350. The SRP-350plus guarantees smooth and speedy printing without any interruptions during printing.

High-speed USB 2.0 on board standard

The SRP-350plus has USB 2.0 interface on the main board as a standard and has an additional interface slot for an optional Serial, Parallel or Ethernet interface card. New POS systems are starting to be equipped with USB 2.0 but most thermal printers in the market only support version 1.1 of USB whose full speed is 12 Mbps. BIXOLON SRP-350plus now supports the new USB 2.0 standard with a High Speed of 480 Mbps. The USB 2.0 interface of the SRP-350plus has download compatibility for USB1.1.



USB 2.0 on board

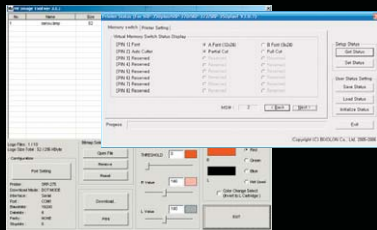
Long lasting auto-cutter



The new auto cutter of the SRP-350plus has long lifespan up to 1.8 million cuts. It has specially designed components such as gears, cutting blade and covers to guarantee its lifetime. In addition, it also has a manual wheel conveniently positioned for easy clearing of the paper jam.

Customer oriented software tools

The new customer oriented utilities enable the users to directly access logo download (NV Image Tool), code page selection (Virtual Memory Switch Manager), firmware download and the other printer settings more easily and with No Hardware setting changes.



Two different models

• SRP-350plusC (with auto-cutter) • SRP-350plusA (without auto-cutter)

PRINT

- PRINTING METHOD : Direct thermal
- PRINTING SPEED : 200mm/sec (SRP-352plus: 195mm/sec)
- RESOLUTION : 180 dpi (7 dot/mm) / 203 dpi (SRP-352plus)
- CHARACTER SIZE : Font A: 12 X 24 / Font B: 9 X 24
Korean: 24 X 24 / Chinese: 24 X 24
- CHARACTERS PER LINE
SRP-350plus - Font A : 42 / Font B : 56, Korean : 21 / Chinese : 21
SRP-352plus - Font A : 48 / Font B : 64, Korean : 24 / Chinese : 24
- CHARACTER SET : Alphanumeric Character : 95
Extended Character : 128 X 34 pages
International Character : 32
- BARCODES
1D : EAN-13, EAN-8, Code 39, Code 93, Code 128, ITF, Coda Bar, UPC-A, UPC-E
2D : PDF417, QR Code

PAPER

- WIDTH : 80mm
- PAPER ROLL DIAMETER : Max Ø 83mm
- SUPPLY METHOD : Easy Paper Loading

RELIABILITY

- PRINTER UNIT : 70,000,000 Lines
- TPH : 150 Km
- AUTO CUTTER : 1,800,000 cuts

INTERFACE : USB 2.0 on board, RS-232C, IEEE1284, Ethernet, Bluetooth

RECEIVE BUFFER : 4 Kbytes

NV IMAGE MEMORY : 256 Kbytes (Mono / Color)

USER DEFINE BUFFER : 12 Kbytes

EMULATION : ESC / POS

DRIVER : Win 95/ 98/ ME/ 2000/ NT/ XP/ 2003 server/ VISTA, OPOS, JPOS

SENSOR : Paper Near End Sensor, Paper End Sensor, Cover Open Sensor

DRAWER PORT : 2 Ports

POWER SUPPLY (SMPS) : AC 100~240V / DC 24V, 2.5A

DIMENSIONS : 145 X 195 X 146 (W X L X H mm)

OPERATING TEMPERATURE : 0 ~ 45°C

OPTION

- SMPS BUILT-IN COVER (RSB-350)
- WALL MOUNT (RWM-350)
- SPLASH COVER (RSC-350plus)

