



## Automatic Tax Calculation

Up to 4 taxes (by rate or table) are computed automatically and added to each sale. Tax status can be shifted as items are entered or at the completion of the sale.

## 16 Departments

The SAM4s ER-180T features 16 departments and is designed for ease of operation and point of purchase control in gift shops, kiosks, food stands and other small retail applications. Departments may be preset to price and track individual items, or be designated 'Single Item' for fast registration of single item sales.

## 500 PLUs

Use the ER-180T's price look-ups (PLUs) to automatically price and track sales for up to 500 fast moving items. PLUs can also accept open price entries.

**Seven Position Keylock** VOID, OFF, REG, X, Z, P, and S modes.

## Heavy-Duty Direct Thermal Line Printer

The ER-180T two-inch thermal printer accepts 58mm

(2¼") paper and is programmable to select receipt or journal printing. Use the included paper take-up spool for journal printing.

## Percent (%) Keys

Percent discount operation can apply to a single item or an entire sale. You can program a set rate or allow variable rates to be entered if no rate is programmed.

## Financial and Cash-in-Drawer Reports

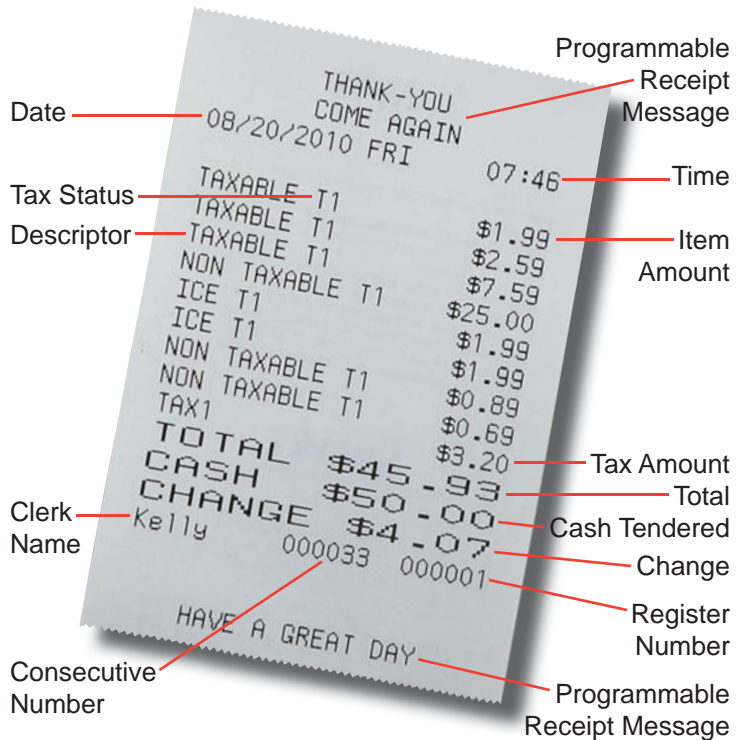
The SAM4s ER-180T gives you a thorough review of your business with a complete analysis of your department sales, clerk, PLU, function totals and actual drawer totals to help you protect your profits.

## Additional Features

- Split Tendering of Payment Between Cash, Check and Charge
- Easy to Read Displays
- Cash Drawer with 4 Bill and 4 Coin Compartments
- Merchant Programmable Receipt/Journal
- Receipt On/Off Button
- Financial and Cash-in-Drawer Report
- Automatic Date and Time Advance

## EASY TO READ CUSTOMER RECEIPT

The SAM4s ER-180T features a 6 line – 24 characters per line – programmable pre-ambles and post-ambles receipt message. Select receipt or journal printing.



Receipt Shown Actual Size

## KEYBOARD

FEED	CLEAR	PLU	X/TIME (X)	RCPT ON/OFF C/CONV	CLERK -	- %	+ %	NO SALE	CALC
RETURN DOUBLE	7	8	9	1 @: /	5 ABC	9 DEF	13	RA (+)	PO (-)
VOID CAPS	4	5	6	2 GHI	6 JKL	10 MNO	14	CHECK	CHARGE
CANCEL BACK	1	2	3	3 P QRS	7 TUV	11 WXYZ	15	SUBTOTAL	
TAX SPACE	0	00	.	4 *	8 . , ? !	12 #	16	CASH/TEND (=)	

## SPECIFICATIONS

- Display:** 8 Digit Green Fluorescent Display
- Printer:** 2-Inch Direct Thermal Line Printer
- Printer Speed:** 7.7 Lines Per Second
- Paper Width:** 2-1/4" (58mm) Paper
- Dimensions:** 12-3/4"W x 16-1/2"D x 8"H (325mmW x 420mmD x 202mmH)
- Shipping Weight:** 12 lbs. (5.43 kg)
- Power Requirements:** 120V AC ± 10%, 60 Hz
- Power Consumption:** Approximately 8 Watts
- Operation Temp.:** 32°F ~ 112°F (0° ~ 45°C)
- Humidity Range:** 30% to 80% RH
- Memory Protection:** Full Charge For 24 Hours Will Protect Memory For Approximately Three Years



All product features are subject to change without notice.