



Cafeterias / Table Service / Quick Service



Food Concessions / Fast Casual Restaurants



Bars / Ice Cream Parlors / Coffee Shops



Dusty Environments Like Pizza and Bakeries



Delivery

NCC Reflection POS Touch Screen Terminal



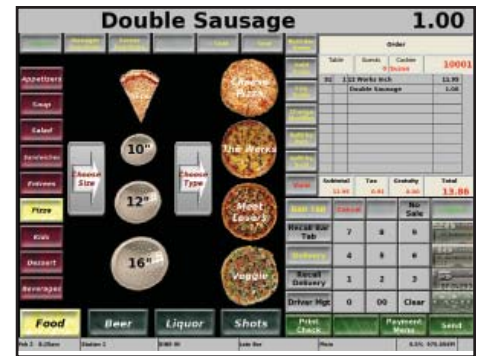
Fanless POS Terminal with True Flat Touch Screen and Vivid LED Backlight for Reliability and Energy Savings

NCC Reflection POS is powered by the most feature-rich software of any product in its class. This system is designed for a wide variety of restaurant concepts including Quick Service, Casual Dining, Fine Dining, Pizza Delivery, Bars and Nightclubs. Reflection POS has the functionality to meet the demands of most restaurant operations.

- Intel® Celeron™ 1037U Dual Core 1.8GHz **Fanless** Processor
- 15" LCD with 5-Wire Resistive Touch
- Bezel-Less – Debris Will Not Collect and Disrupt Touch Operation – Resists Liquid Splashes and Allows Easy Clean Up
- Self-Healing, Fully Data-Redundant Network
- Integrated Credit Card / PIN Debit / Gift Card Processing
- Easily Wall Mountable



Customized graphical table maps.



Graphic screens guide operators with minimal training.

No Single Point of Failure

NCC Reflection POS is equipped with the most sophisticated, terminal-redundant network on the market. Using the integrated high-speed Ethernet, all system information is replicated on every terminal across the TCP/IP network. If a terminal is removed from the LAN, all information is automatically synchronized when the terminal re-enters the network.

Quick Service

NCC Reflection POS is equipped to handle all sizes of quick service operations. It possesses all operational and management functionality that are key to running an efficient QSR operation.

- Auto-Meal Combination Recognition
- Coin Changer Support
- Kitchen Video Support
- Assign Customer Phone Number for To-Go Orders
- Dual Drive-Thru Modes
- Drive-Thru Order Confirmation Board Support
- Inventory Control Including Recipes and Cost Analysis
- Order Confirmation Board and Coin Changer Interfaces

Table Service

NCC Reflection POS can be easily designed to allow for the various styles of restaurant concepts. From the start of the order process, the various transitions that a guest check can be subjected to are handled quickly and efficiently. Whether in a cashier style operation or full service using a banked wait staff concept,

NCC Reflection POS has all of the necessary management control and report tracking to provide an accurate view of the days business.

- Table and Retained Check Tracking
- Graphical Table Map
- Integrated Credit Authorization Option
- Server Banking and Cashier Operations
- Auto Gratuity
- Inclusive Tax Items
- Liquor Dispenser Support
- Assign Names to Bar Tabs
- Priority Sorting for Kitchen Printers
- Custom Kitchen Messages
- Separate Check Functionality by Item, Seat, or Dollar Amount
- Split an Item Up to 9 Ways
- Combine Check Function
- Server Transfer, One or All Checks
- Check Recall By Bar Code Scanner

Online Ordering and Delivery Operations

The NCC Reflection POS delivery module will allow guest checks to be created and assigned to customers for delivery. NCC Reflection POS can maintain a customer file of 9,999 entries which can be accessed and sorted by customer ID number, phone number, address, first and last name or by city. NCC Reflection POS can create and store new customers on the fly during a first time purchase. When used with PC WorkStation NCC Reflection, POS can automatically retrieve order history allowing for fast and accurate order entry. Guest checks created for delivery are

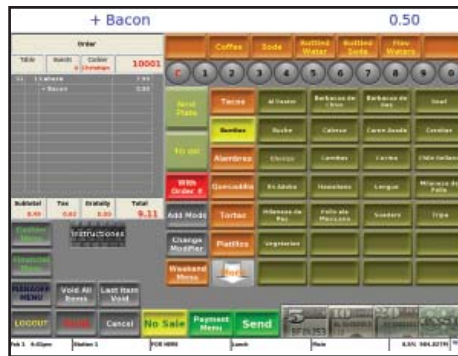
managed by the driver dispatch functions where accountability for delivery orders are assigned to drivers.

- 9,999 Customer File
- Sort By ID, Phone, Address, First and Last Name or By City
- Automatically Searches By Sort Option
- Create New Customers On the Fly
- Delivery Notes for Each Customer
- Retrieve Order History (Requires PC Workstation)
- Fast and Accurate Order Entry
- Select All Items or Tag Item to Current Check
- Personalized Service
- Assign Delivery Order to Available Drivers
- Displays a List of Employees Clocked In with Job Code "Driver"
- Displays Assigned Checks
- Dispatch Drivers
- Displays Status of Drivers (Ready or En Route)
- Arrange Tickets for Desired Delivery Route
- Checks Totals Posted to Driver for Accountability

Inventory

An integrated inventory system accurately tracks product and ingredient usage by way of recipe definitions and product mix information. Item count down feature can signal the wait staff that a particular product is no longer available, while inventory reports provide usage details and food cost information.

SPT-4845 NCC Reflection POS Touch Screen Terminal



Menu items, condiments, flavors, instructions and options can be placed upon one key. When an item is registered, a specific key displays the options available for the item. You can control how many choices can be made as well as what options display next.

Built in Time Clock

Using the available time clock feature, NCC Reflection POS will help managers capture the valuable information necessary to control labor costs. Employee clock in/out procedures can either be performed by numeric entry, magnetic card or digital I-Button. Security levels assigned by job codes provide the controls necessary to access POS functions. Detailed time clock reports will provide employee punch time data with accumulated pay period totals, as well as additional reports to provide critical labor to sales information.

Programming

With NCC Reflection POS, no back office PC is required to make changes or additions to the system tables. All menu item, employee, screen design, etc., changes may be performed directly on the POS terminal in an easy to use programming mode using an on screen touch keyboard. Changes are accomplished easily and are immediately available to all stations in the POS system.

Extensive Reporting

NCC Reflection POS has a wide range of real time reports. Reports can be obtained locally at each station or on the back room PC if equipped with the optional PC Workstation software. Report data can also be exported and communicated via FTP push or poll methods for use with other reporting solutions. Detailed information can be obtained by station, system, revenue center, user and many more.

Choose the platform that best suits your business...

NCC Reflection POS Embedded

The Embedded Reflection application runs on an embedded real-time operating system. Because Windows™ is not deployed, you have the security of knowing that your staff is unable to open the Internet on your POS station, run other applications or inadvertently load viruses or spyware. Your NCC embedded application is installed on a flash drive, not a hard disk drive, providing additional speed and exceptional reliability. For unprecedented savings, security, reliability and redundancy, NCC Reflection POS Embedded is the preferred NCC platform.



NCC Reflection POS for Windows

The same reliable Reflection application can be installed on a Windows™ operating system platform. Reflection for Windows allows the possibility of running applications other than NCC, performing remote file maintenance, or using Datacap Systems NETePay™ rather than a Datacap Tran™ device. The Reflection Windows™ version will also support an optional rear LCD customer display screen as well as other standard Windows peripherals. Consult with your NCC Reseller to determine which Reflection operating system platform is best suited to your needs.



SPT-4845 NCC Reflection POS Touch Screen Terminal



Optional Integrated 15" Rear LCD Customer Display (NCC Reflection POS for Windows)



Optional Integrated 9.7" Rear LCD Customer Display (NCC Reflection POS for Windows)



Optional Integrated 7" Rear LCD Customer Display (NCC Reflection POS for Windows)



Optional Integrated Rear VFD Customer Display

Options and Upgrades

Configure your system with these easy to add options:

- Integrated VFD Customer Display – 2 Lines x 20 Characters
- Integrated 7", 9.7" or 15" LCD Customer Displays (NCC Reflection POS for Windows Only)
- WiFi Module (NCC Reflection POS for Windows Only)
- Wall Mount Bracket with Standard VESA Configuration



Two USB Ports on the Left Side

Connectivity

- A Drawer Voltage Selector Switch
- B Cash Drawer
- C Parallel
- D Line-Out
- E Mic-In
- F Line-In
- G USB (2)
- H LAN
- I COM1 (Powered)
- J COM2 (Powered)
- K USB (2)
- L COM3 (Powered)
- M VGA
- N COM4 (Powered)
- O DC Out (For Rear LCD)
- P DC In (Power)

Specifications

Processor:	Intel Ivy Bridge Celeron 1037U 1.8GHz Fanless
Cores / Threads:	Dual Core / 2 Threads
Cache Memory:	2MB
Bus Speed:	5 GT/s (Giga Transfers per Second)
Display LCD:	True Flat 15" LCD with LED Backlighting
Resolution:	1024 x 768
Brightness:	Adjustable Up to 350 cd/m2
Integrated Speakers:	Integrated 2 Watt Speakers
Chipset (PCH):	NM70
Touch Panel:	5-Wire Resistive Touch
MCR:	Integrated USB Interface Triple Track MCR
Hard Drive:	Not Applicable 2.5" With SATA Interface
Standard O/S:	Not Applicable POSReady 2009 / POSReady 7
RAM Memory – 2 Slots:	2GB SODIMM DDR3 (1600MHz) Expandable To 4GB
Video Memory:	Shared System Memory Up To 512MB
Compact Flash:	Standard SATA Adaptor Optional
Serial Ports – 4 External:	COM1, COM2, COM4 = DB9 With Pin 9 0V/+5V/+12V (User Selectable by BIOS) COM3 = RJ45 Pin 1 0V/+5V/+12V (Selectable by Jumper)
2 Internal:	COM5 = Primary Touchscreen COM6 = RJ45 for Customer Display Port (VFD)
Parallel Port:	One DB-25F
USB Ports:	6 V2.0 (2 Left Side of screen / 4 Bottom)
Cash Drawer Port:	RJ11, 12V or 24V Selectable By Switch (Maximum 2 Drawers – Supports Drawer Compulsion)
LAN Port:	RJ45 10/100/1000 Base-T (Giga LAN) RealTek RTL8111DL
VGA Port:	One DB15F Display Port for Second LCD (Resolution 2048 x 1536)
Audio Port:	One Line-In / One Line-Out
Mic Port:	One Mic-In
Power Supply:	60W, 12V/5A 100-240V 50-60Hz External Power Adaptor
Current / Power Usage:	0.37A / 45W
Operating Temperature:	32° F to 95° F (0° C to 35° C)
Dimensions – Base:	11"W x 7-3/8"H x 8-5/8"D
Overall:	14-1/8"W x 12-1/8"H x 8-5/8"D
Shipping Carton:	20-1/4"W x 13"H x 16"D
Shipping Weight:	17.5 lbs.
Safety and EMI:	FCC / RoHS

